

Oncology Days
ECCO 44

**PROMOTING INNOVATION
AND QUALITY FOR PATIENTS**

VALENCIA 2022

**GENERAL ASSEMBLY
AND
SCIENTIFIC CONFERENCES**

June 15th - 17th 2022

Forming a Comprehensive Cancer Centre in an University Hospital

Example of

Institut du cancer
PARIS CARPEM

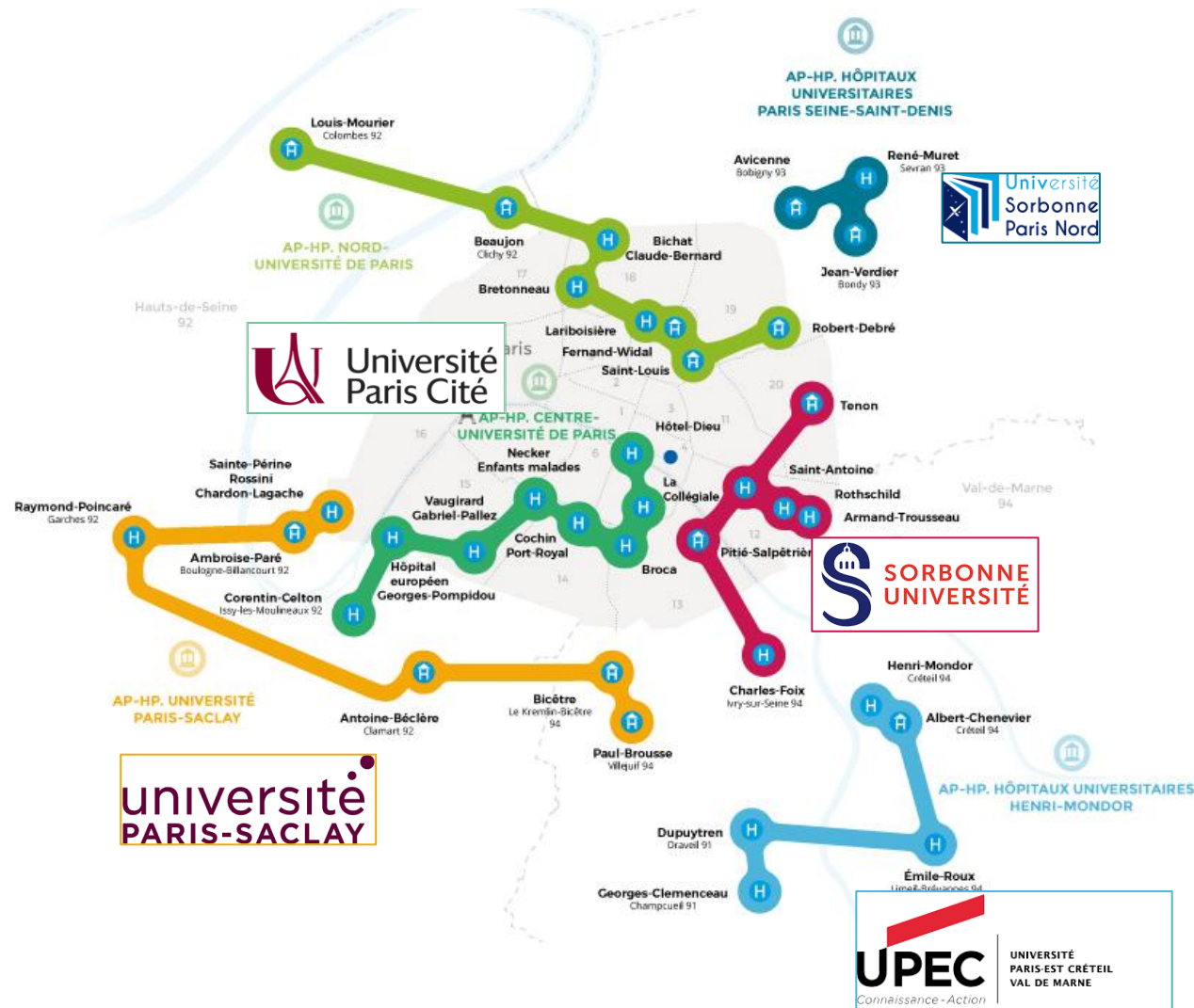
CANCER RESEARCH FOR PERSONALIZED MEDICINE

AP-HP.Centre-Université Paris Cité

Pr. Pierre Laurent-Puig
Director of Institut du Cancer Paris CARPEM

Intitut du cancer Paris CARPEM is a part of AP-HP

Overview



AP-HP is a network of **39** university hospitals in the Great Paris area.

Since 2019 organized in :

6 groups linked to

5 universities

Université Paris Cité
Université Paris Saclay
Sorbonne Université

Université Paris-Est Créteil Val de Marne
Université Sorbonne Paris Nord

An annual budget of **7** billions €

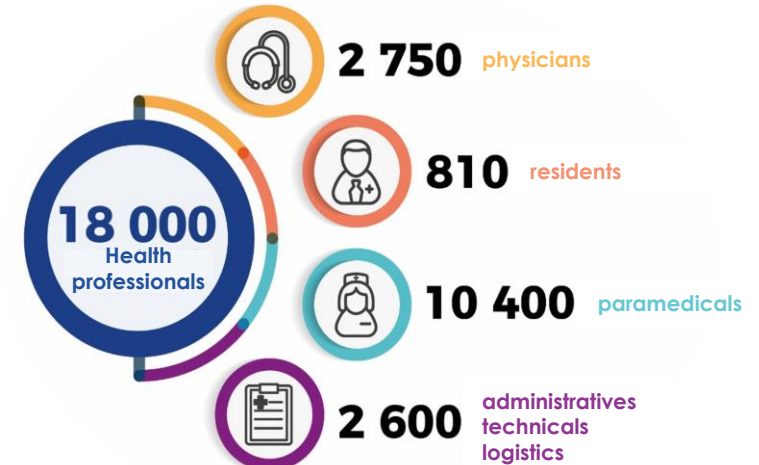
AP-HP.Centre-Université Paris Cité Overview



AP-HP.Centre-Université Paris Cité is located in the center of Paris



2 millions patients treated/year
>4000 overnight bed and day hospital places



Oncology Strengths of AP-HP.Centre-Université Paris Cité

Clinical expertise



3 hospitals with a high expertise in oncology

care, research and teaching

> 8,000

new cancer patients per year in AP-HP.Centre

> 380

hospital beds for overnight stays

90

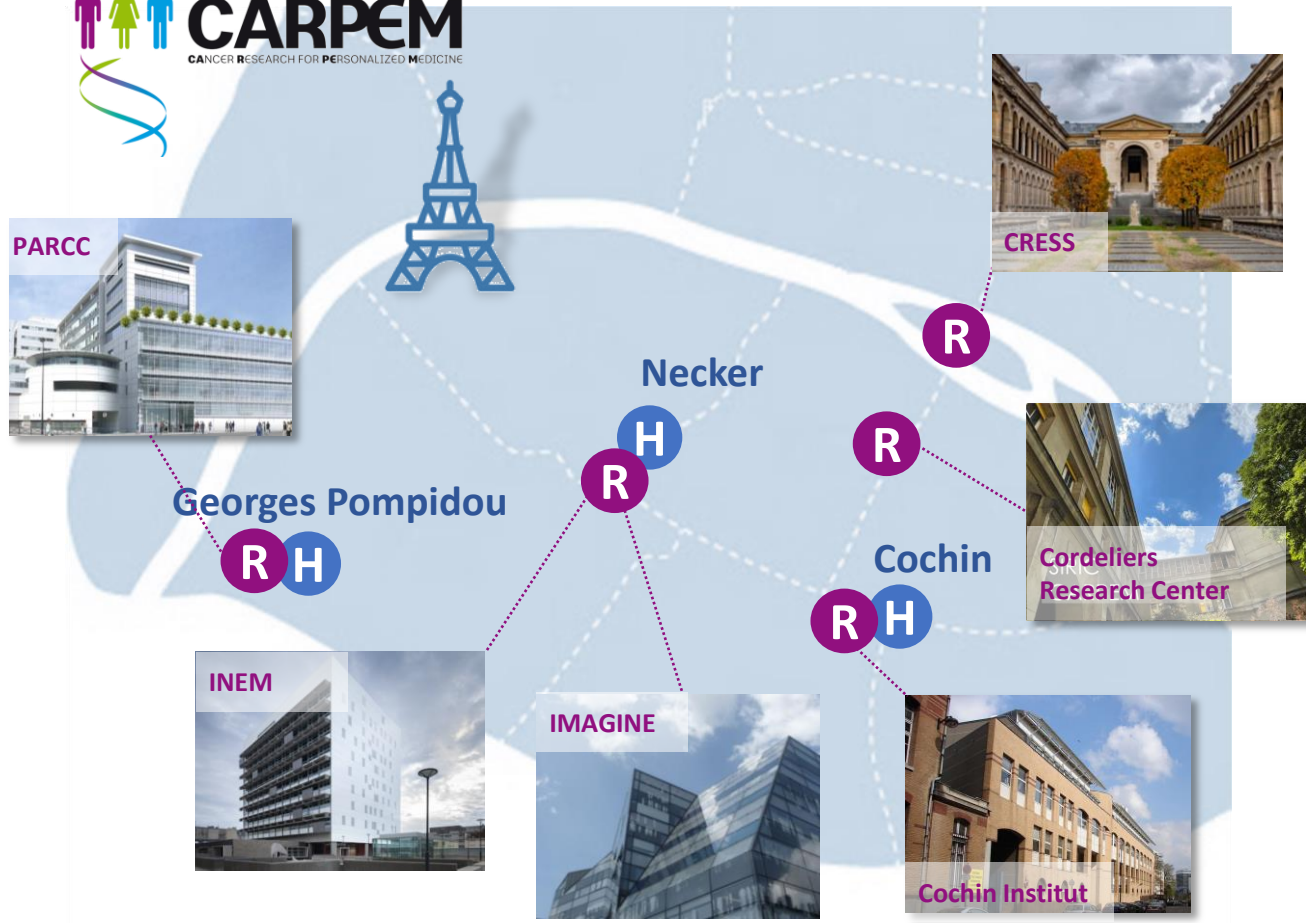
day-hospital places

> 160

Interventional clinical trials open to inclusions

Oncology Strengths of AP-HP.Centre-Université Paris Cité

Translational research expertise



>25 research teams affiliated to



In 6 research centers close to hospitals

>100 senior researchers

>100 full professors or lecturers

>500 publications/year in the field of oncology

Since 2012

Labeled as a cancer integrated research site (SIRIC) :
The SIRIC CARPEM



Why create an institute dedicated to oncology?



Internal aims

- **To reinforce** the sense of belonging to a major cancer care center
- **To integrate** the medical activities of several sites
- **To create** a community dedicate to a common goal

→ *Using oncology to drive quality of care across the different hospitals*



For the patient

- to offer coherent patient **pathways** through a large medical expertise
- To improve **quality of care** in oncology



External aims

- **To build** an international recognition
- **To Improve** visibility of our oncology expertise for patients and professional at regional and national level

→ *Using the institute to increase our recognition in European networks*

Facing challenges



MERGING OF 3 HOSPITALS

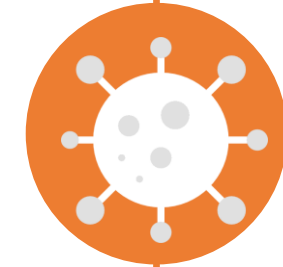
- Different medical culture
- For some clinical units, there have been competing activities in the past.
- Need to homogenize medical practices in the field of oncology

- The majority of the clinical wards are not fully dedicated to cancer patients
- To succeed in making medical wards treating different pathologies to work together around a common theme and a recognized quality standard

WIDE ACTIVITIES



- IRL meetings cancelled
- Tireness of care teams
- Focusing activities by site and by services to manage the crisis
- Closure of beds/wards : permanent reorganization of care to preserve cancer treatments



COVID-19 CRISIS

Why and How we do it?

A part of our community is united around translational research through the SIRIC CARPEM since

2012



- **Launch programs** including care, research and education for the next 4 years
 - Large implication
 - Physicians, Surgeons, Biologists
 - Pharmacists, Paramedics, Researchers
 - Common objectives
- **Define a medical and scientific strategy for cancer** that have been integrated in the APHP.center strategic plan

- Creation of a **dedicated project team**
- **Involvement of key administrative staff** in our team
- **Action:**
 - ⇒ Website
 - ⇒ Organization of webinars
 - ⇒ Distribution of informative flyers
 - ⇒ Visiting teams during the accreditation process

Mobilizing

the medical community

the paramedical community

the administrative community



Why is it a success?



**To improve
patient care**

**Federation of the
different professions
in the hospital**

**Rewarding for
the care teams**

Research

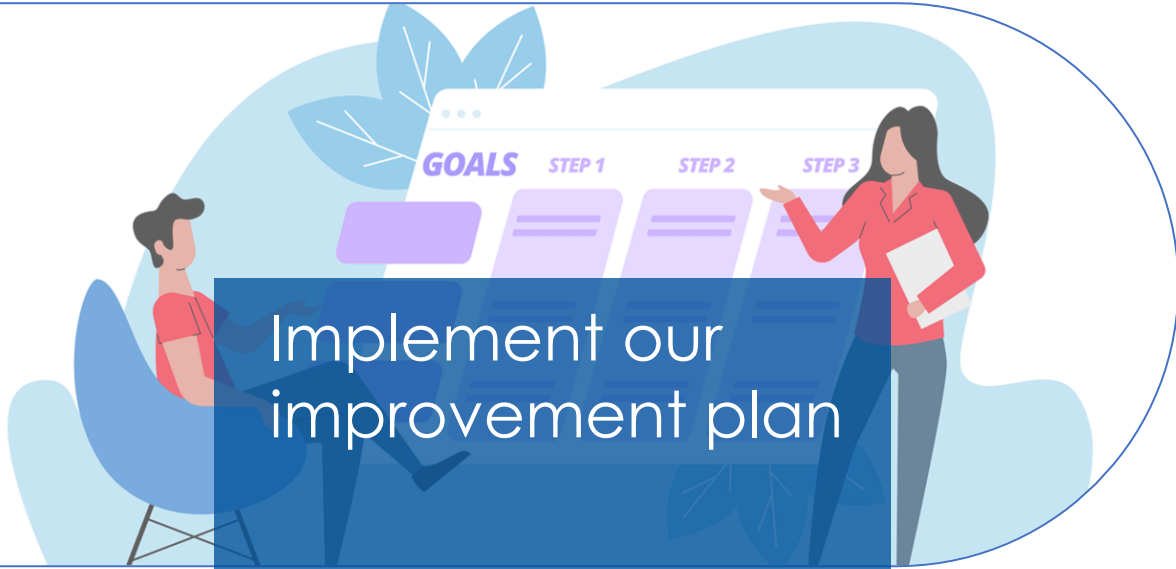
Everybody stay focused on the only aim:
the patient care

Medical, paramedical and administrative community are gathered around a common aim which is cross-cutting to a large part of the hospitals

Recognition that cancer patient care is about 20% of the overall activity of APHP.Centre

A 10 years common base for clinicians and researchers with the SIRIC CARPEM

What about tomorrow?



Implement our
improvement plan



Participate to
European research
programs in the name
of our Institute



Participate in the
improvement of
health care at the
European level

Acknowledgments

- **The OECI accreditation project team**



Pr Pierre
Laurent-Puig



Pr Marie
Wislez



Hélène
Cart-Grandjean



Pr Catherine
Durdux



Valérie
Quévieux



Pascale
Finkelstein



Aude
Chaboissier



Regina
Passarinho



Yannick
Ladeiro

- **The functional directions of APHP.Centre-Université Paris Cité**

- **The nurses/head nurses** strongly implicated in this institute/accreditation
- **The physicians, oncologists, surgeons**

For more
informations
flash this
QR-code

